



# SANY

Quality Changes the World



شركة محمد عبدالله العريض المحدودة  
Mohammad Abdullah Al Areeedh Ltd. Co.



## SANY TRUCK CRANE STC 300

## ULTRA- LONG BOOM. STRONG LIFTING CAPACITY



**P1**

Product features  
Chassis

**P2**

Product features  
Superstructure

**P3**

Technical parameters

## SPECIFICATION/CHASSIS

### Frame

Integrated welding structure, optimal design and testing, high-tensile structural steel.

### Electrical system

24V, single line system

### Outrigger

H-mode arrangement, fully hydraulic control.

### Driver's Cab

Rubber mounted steel cab, corrosion-resistant power coating and two coating painting, ergonomic can, 2 comfortable seats, with pneumatically sprung driver's seat inc. heat rest. Three-point seat belts and convenient dashboard, vertically adjustable steering wheel, front baffle triplex glass, wide visibility, windscreen defroster fans, side electric toughened glass, engine-dependant hot water heater, roller blinds, radio.

### Engine

Weichai WP10.270,  
rated power 199 /2200 kw/(r/min),  
rated torque 1100 /1200-1600N.m/(r/min).

### Axle

Axle 1、 2 steering, axle 3、 4 driving.

### Transmission system

FAST gearbox technology, double middle-axle 8-speed gearbox, single-H and double flexible axle control.

### Suspension

Steel spring imbalanced suspension on axles 1 and 2, steel spring two-axles balanced suspension on axles 3 and 4.

### Tyre

12 tyres, PR 11.00-20-18PR/10

### Brake

Dual- circuit driving brake controlled by foot pedal, auxiliary brake controlled by engine exhaust, emergency and parking brake controlled by handle.

### Steering

8×4, Single-circuit hydraulic power assistance steering system with mechanical steering limiter.

### Hydraulic system

Constant displacement gear pump controlled extension and retraction of horizontal and vertical outriggers.

## SPECIFICATION SUPERSTRUCTURE

### Cab

Fabricated from corrosion-resistant steel, huge-arc integrated front window, convenient and easy operation.

### Main boom

huge-arc hexagonal cross section, telescopic mechanism assisted by two cylinders and sheaves for safety and high effecton.

### Counterweight

Mounted on the turntable through connecting bolts.

### Hydraulic system

Triple gear type main pump, the first pump activates the actions for main and auxiliary winch, the second pump controls extension , retraction, luffing, and the third pump provides power for slewing and outriggers of carrier.

### Main winch

High pressure automatic variable displacement hydraulic motor with planetary gear type speed reducer, spring-loaded constant-close brake set in lifting and rising reducer.

### Aux. winch

High pressure automatic variable displacement hydraulic motor with planetary gear type speed reducer, spring-loaded constant-close brake set in lifting and rising reducer.

### Elevation

Deadweight dropping amplitude is controlled by amplitude balance valve.

### Slew

Slewing motor and reducer, max. slewing speed 2.3r/min.

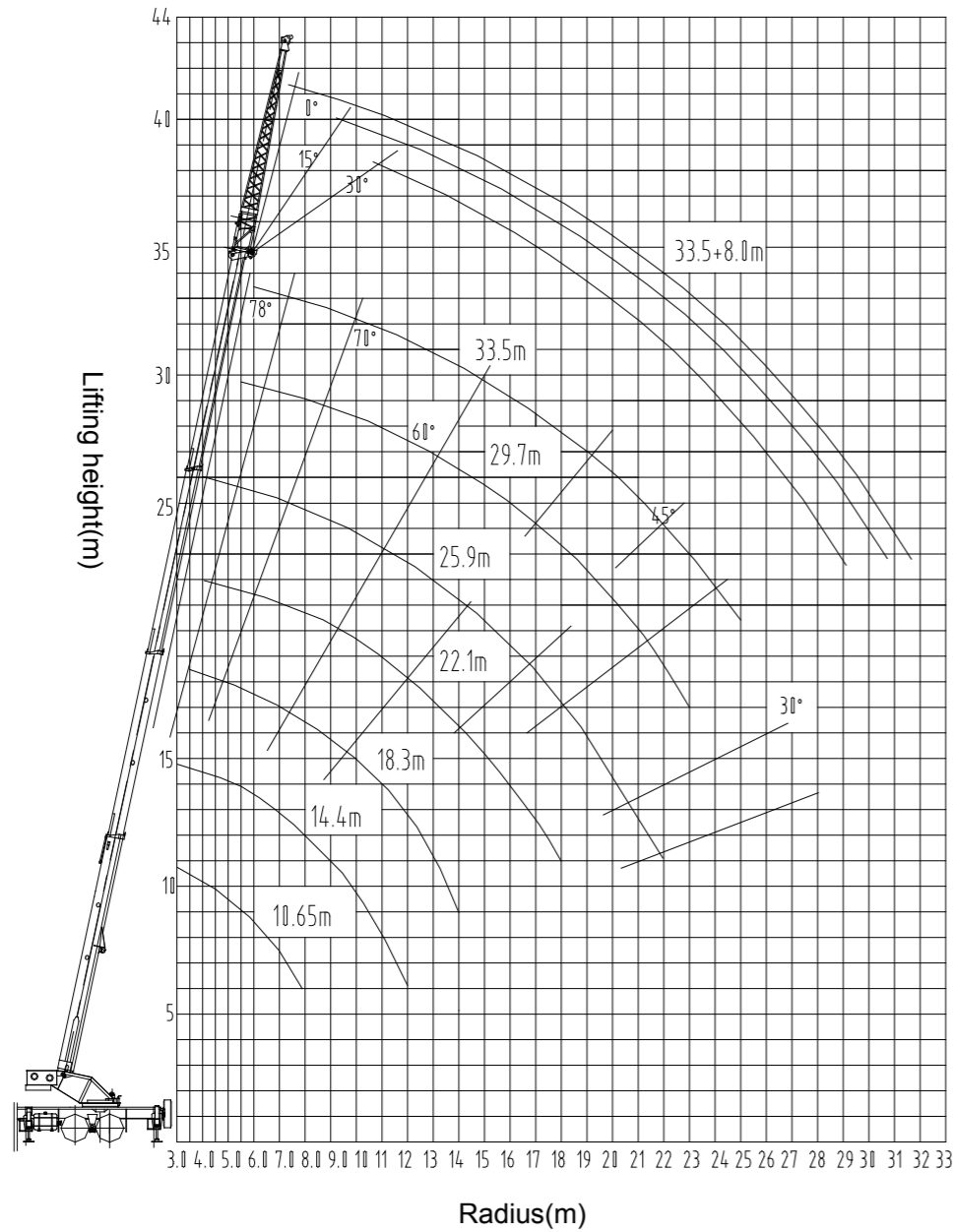
### Safety devices

LED touch monitor indicates important parameters: torque parameter, hood load, rated load, boom length, angle, lifting height etc., load chart and working data setup integrated with functions of safety limitation.

## TECHNICAL PARAMETER

Type	Item	Unit	Value	
Dimensions	Overall Length	mm	12600	
	Overall width	mm	2500	
	Overall height	mm	3450	
	Axle distance	1st、2nd	mm	1450
		2nd、3rd	mm	3900
		3rd、4th	mm	1350
	Wheel distance	1st、2nd	mm	2039
2nd、3rd		mm	1847	
Weight	Overall weight	kg	30000	
	Axle load	1st、2nd	kg	11600
		3rd、4th	kg	18400
Power	Rated output	WP10.270	kw/(r/min)	199 /2200
	Max. rated torque	WP10.270	N.m/(r/min)	1100 /1200 ~ 1600
Travel specifications	Max. traveling speed		km/h	83
	Min. turning radius		m	11
	Min. ground clearance		mm	272
	Approach angle		°	≥ 18
	Departure angle		°	≥ 15
	Braking system(30km/h)		m	≤ 10
	Max. gradeability		%	30
	Oil consumption for every 100km		L	≤ 40
	Max. lifting weight		t	30
	Min. working radius		m	3
Main performance parameters	Max. lifting moment	Base boom	kN.m	984.5
		Full extension	kN.m	576
		Main boom& jib	kN.m	341
	Outriggers span	Longitudinal	m	5.1
		Transverse	m	6.0
	Max. lifting height	Base boom	m	10.9
		Full extension	m	33.9
		Main boom& jib	m	42
	Length of lifting boom	Base boom	m	10.65
		Full extension	m	33.5
Main boom& jib		m	41.5	
Jib offset		°	0、15、30	
Working speed parameters	Max. single rope lifting speed of main winch(no load)		m/min	130
	Max. single rope lifting speed of auxiliary winch(no load)		m/min	130
	Boom extension/extraction time		s	90/56
	Boom lifting/descending time		s	72/60
	Max. slewing speed		r/min	2.3
	Outrigger extension/extraction time (lateral)		s	35/30
	Outrigger extension/extraction time (vertical)		s	30/25

## STC300 WORKING RANGES



## LOAD CHART FOR MAIN BOOM

( Unit: kg )

Radius (m)	Fully extended outriggers, rear and side work (mm)						
	10.65	14.4	18.3	22.1	25.9	29.7	33.5
3	30000	20000	16500				
3.5	25500	20000	16500	12000			
4	23300	20000	16500	12000	11000		
4.5	21800	19500	16500	12000	11000		
5	19600	18500	16000	12000	11000	8500	
5.5	17900	17000	15000	12000	11000	8500	7000
6	16000	15500	14000	12000	11000	8500	7000
7	13000	12800	12100	10900	9500	8500	7000
8	10500	10500	10500	9400	8500	7800	6800
9		8500	8500	8800	7800	7000	6200
10		7500	7000	7200	7000	6200	5600
12		5500	5200	5100	5300	5300	4800
14			4000	4000	4000	4000	4100
16			3000	3200	3200	3200	3300
18				2600	2580	2600	2600
20				1600	2050	2000	2000
22					1650	1600	1700
24						1250	1400
26						900	1100
28							750
30							550
Number of lines	8	6	6	4	3	3	3







**Quality Changes the World**

**SANY HEAVY INDUSTRY CO., LTD.**

Address: 319 Chuanda Road, Chuansha Economic Park,  
Pudong, Shanghai, China, 201200

Service Hotline: +0086-21-60303131

Email: [crd@sany.com.cn](mailto:crd@sany.com.cn)

For more information, please visit: [www.sanygroup.com](http://www.sanygroup.com)

For our consistent improvement in technology, specifications may change without notice.  
The machines illustrated may show optional equipment which can be supplied at additional cost.

شركة محمد عبدالله العريض المحدودة  
Mohammad Abdullah Al Areehd Ltd. Co.

Ibn Alameed Str 11464  
Riyadh, Saudi Arabia

Tel: +966 9200 11 888

Fax: +966 11 241 2377

e-Mail: [info@alareedh.com](mailto:info@alareedh.com)  
[www.alareedh.com](http://www.alareedh.com)

